

Selection criteria

Submissions will be assessed against the following criteria:

- teaching skill and/or potential to be an outstanding teacher or educational leader;
- commitment to teaching and capacity for sustained contribution over time;
- the potential of the proposal;
- the strength of the referee support; and
- the personal and professional qualities of an applicant, and the standing they are held in by colleagues, supervisors and senior Departmental officers.

Hardie Fellowship recipients will also be selected for their capacity to act as ambassadors for Tasmania and the Department of Education.

Please note that the Panel may choose not to select recipients, should no suitable proposals be available.

Referee reports

Two referee reports are to be forwarded with the application.

One of these will be the applicant's Principal/Manager or Learning Services General Manager, and one should be a 'character referee' with the ability to describe the particular personal qualities of the applicant which would make them a suitable ambassador.

Contacts

Potential applicants are encouraged to discuss the Fellowships with their Principal and / or Learning Services General Manager.

Applicants are also welcome to contact the Fellowship Project Officer on ☎ 6233 5181 or email: awardsandscholarships@education.tas.gov.au

Fellowship Guidelines and the application form are available at the website: <http://www.education.tas.gov.au/school/educators/awards/hardie>

Closing date

Applications, including two referee reports, should be received by 5.00 pm Monday 30 June 2008. Please note that late applications will not be accepted.

Forward applications to:

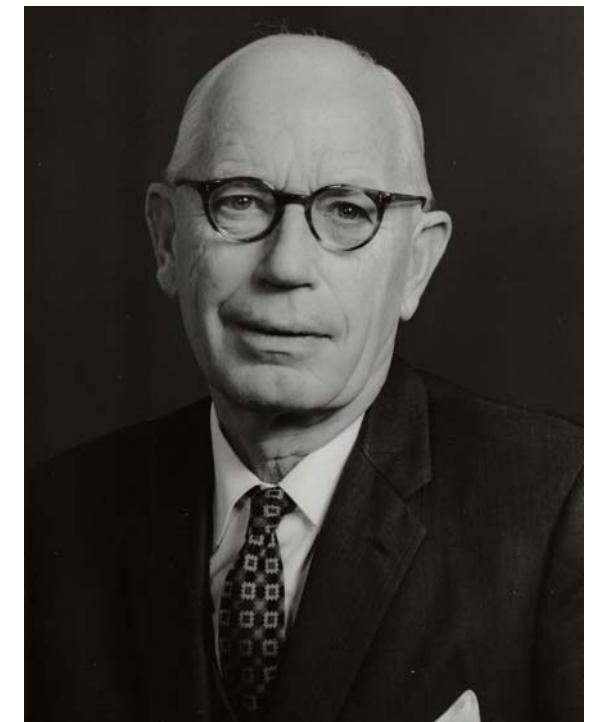
The Project Officer
Hardie Fellowships
PO Box 730
GLENORCHY TAS 7030

or

Emailed to: awards@scholarships@education.tas.gov.au



2008-2009 HARDIE FELLOWSHIPS



Professor Charles Hardie

**Term 3 2008 – throughout 2009
(or date/s to be negotiated)**

Professor Charles Hardie

Professor Hardie was born in Glasgow, Scotland in 1911 and attended Cambridge University. He was handpicked by Ludwig Wittgenstein for his class and he was a companion of John Maynard Keynes; both eminent philosophers.

Professor Hardie served as the Dean of Education at the University of Tasmania from 1946 until his retirement in 1976. He established an international reputation in the field of philosophy of education with his 1942 book, *Truth and Fallacy in Educational Theory*. The work was significant enough that it saw a 1962 reissue by the Teachers' College, Columbia University. Albert Einstein wrote Professor Hardie a letter admiring his 1947 book, *Background to Modern Thought*.

During 1968 Professor Hardie was a visiting scholar at the College of Education at the University of Illinois. His experience was one that left a lasting impression in his life.

Following the death of Professor Hardie in 2002, the Hardie Fellowship Trust was established under the terms of his Will and is administered by Tasmanian Perpetual Trustees Limited in its capacity as trustee. The perpetual trust, which was established with a bequest of \$7.5 million now stands at \$12.3 million. Income from the trust is used to provide fellowships for teachers in the employment of the Department of Education and who have demonstrated outstanding skills, to enable them to pursue advanced studies or research at a University in the United States.

Professor Hardie is perhaps best-remembered as a warm and generous man who spent 30 years helping students become teachers and scholars. Now, his generosity offers Tasmanian teachers new opportunities to learn and to grow in their professional efforts for generations to come.

Purpose

Fellowships will be allocated for long term study (6 months or more) at a university in the USA approved by the Department of Education:

- study at a USA tertiary institution; and/or
- research associated with a USA tertiary institution.

The study or research may be within a specific discipline or related to the broader field of education.

Fellowships may be allocated for 6 months or longer depending on the proposed study or research program. Please note that Fellowships can be undertaken in subsequent years, not necessarily the year following the announcement.

Selection Panel

Fellowship recipients will be selected by a panel of Department of Education representatives, appointed by the estate of Professor Hardie.

The Panel comprises:

- the Secretary, Department of Education, Tasmania;
- Senior Officer, Department of Education, Tasmania
- the Director of the Human Resources Management Branch, Department of Education, Tasmania;
- the Dean of Education, University of Tasmania;
- a representative from the teaching profession; and
- such persons as the Trustee shall from time to time approve.

Examples of possible study or research include:

Teachers College, Columbia University (New York) offers two programs for literacy specialists. Both the Literacy specialist (Birth – Grade 6) and Reading specialist are MA programs. Literacy Specialist (Birth-Grade 6 is designed to immerse the literacy educator in an intense study of practice, theory and research with the goal of equipping participants to assume leadership roles in literacy education. The Reading Specialist Program provides students with a broad foundation in applied educational psychology as it relates to literacy acquisition, and concentrated preparation in assessment and intervention in reading and writing difficulties. The program provides experience in working with child, adolescent, and adult learners.

The Mathematics or Science Education Leadership Program at the University of Washington, Seattle offers two unique Ph.D. in Education specialisations—one for educators interested in Mathematics Education Leadership K-12, the other for educators interested in Science Education Leadership K-12.

The 'Supporting Teachers for Instructional Improvement' course with Richard Elmore at Harvard University, provides students with the theoretical and empirical bases for understanding the sources of successful classroom instruction and the processes by which it can be brought to scale at the school and system level.

The Curry School of Education at the University of Virginia (where Carol Anne Tomlinson leads thinking and practice on differentiating instruction) provides a course in Curriculum and Instruction: Education Specialist as an Education Specialist degree and also a masters program in curriculum and Instruction. The first has an emphasis on instruction is designed for experienced educators whose professional goals include working directly with classroom teachers to improve instruction. The master's degree program is designed for individuals who want to broaden their knowledge of curriculum and instructional practices and includes electives such as Differentiated Instruction; Reading in the Content Areas; Middle and High School Curriculum and Curriculum Design and Evaluation.

At the University of California at Berkley Judith Warren Little offers graduate courses within the Policy, Organisation, Measurement and Evaluation program. These courses focus on teachers' work and the contexts of teaching, including teacher professional learning, the investigation of teachers' communities of practice and conceptualizing and studying the school as workplace. Other courses in this program include Issues in Teaching and Learning for Educational Leaders and School Data Analysis for Principals.

Costs covered by the Fellowship

The Fellowship provides all recipients with their base salary while they are in the United States. Recipients are on unpaid leave for the duration of their Fellowship.

Recipients will receive financial assistance to cover the cost of course fees, living allowance, travel expenses and other costs deemed necessary to successfully complete the course or research; such as family travel and accommodations costs and visas for stay in the USA longer than 6 months.

Eligible applicants will be:

- a permanent employee within the Tasmanian Department of Education employed in accordance with the Teaching Service (Tasmanian Public Sector) Award;
- a citizen of Australia; and
- a registered teacher.

An individual to whom a Hardie Fellowship has been awarded is eligible for further Fellowships. Unsuccessful applicants from previous years may apply for a Hardie Fellowship again.